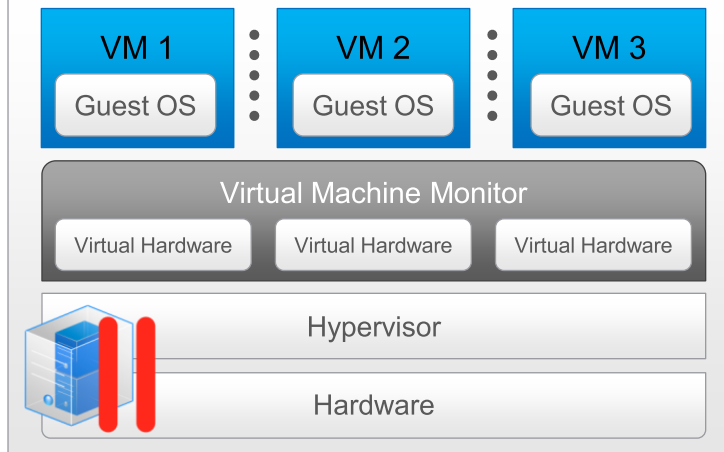

Parallels Hypervisor Virtualization: SERVER CONSOLIDATION

Parallels Hypervisor Virtualization

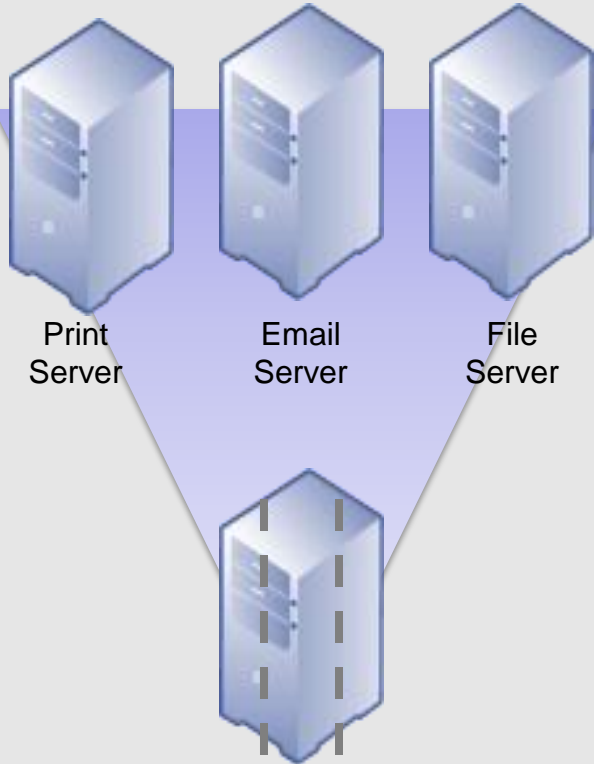


Parallels Server 4 Bare Metal



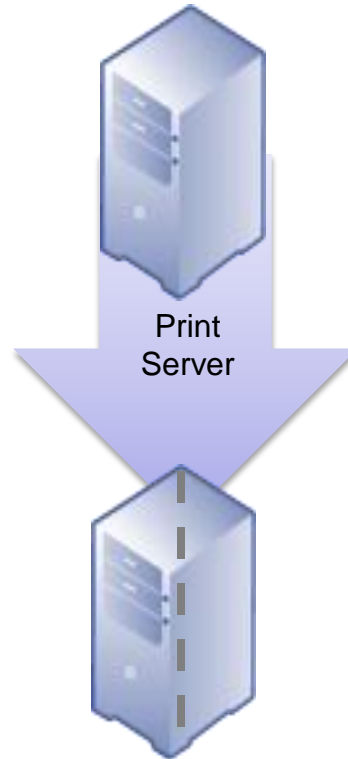
How server virtualization helps you

Consolidate existing servers to reduce footprint



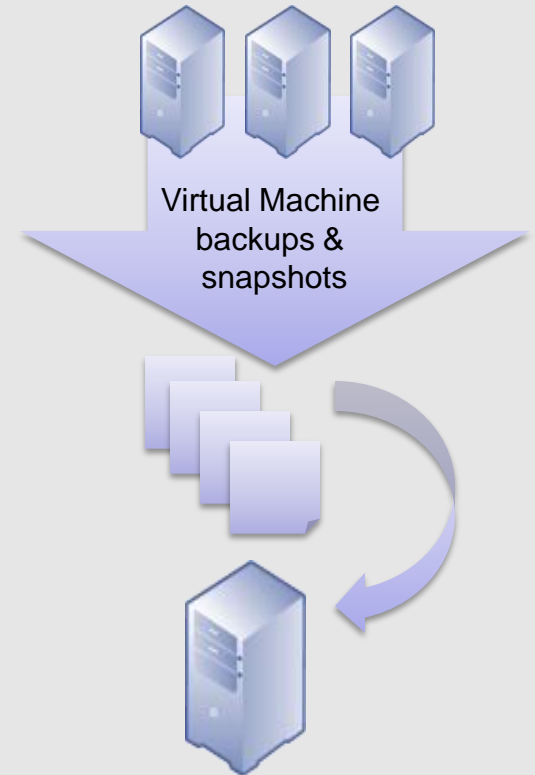
All 3 environments run
Independently on 1 server

Leverage existing servers to add new solutions



Print Server
Collaboration Application

Reduce recovery time when problems arise



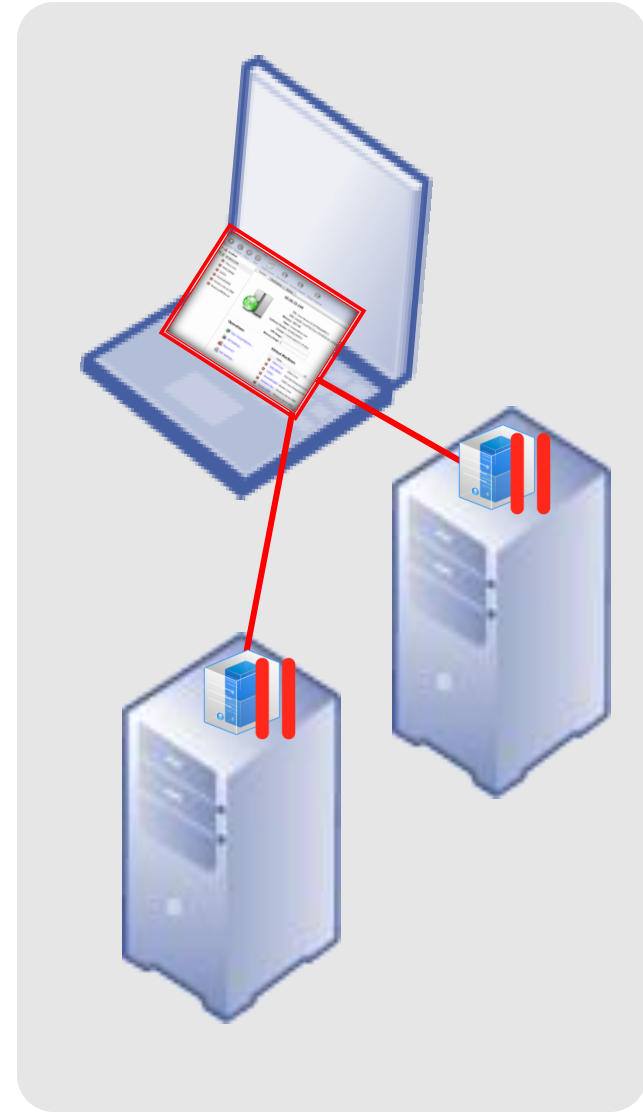
Simply copy a file to restore
running Virtual machine

Introducing Parallels Server 4 Bare Metal

Easy to use

1. Install Parallels Server 4 Bare Metal directly onto x-86 or x-64 server(s)
2. Install Parallels Management Console on a client (Windows, Linux or Mac OS X)
3. Create a virtual machine by opening a template, installing an operating system or migrating an existing server

The virtual server & its applications are now available on your network



It's comprehensive

Powerful,
proven
hypervisor

Multi-server
management
console

Easy data
recovery

Up to 12
virtual CPUs
per virtual
machine

Virtual
machine
templates

Backups &
snapshots

Up to 64GB of
virtual RAM per
virtual machine

Cloning of
existing virtual
machines

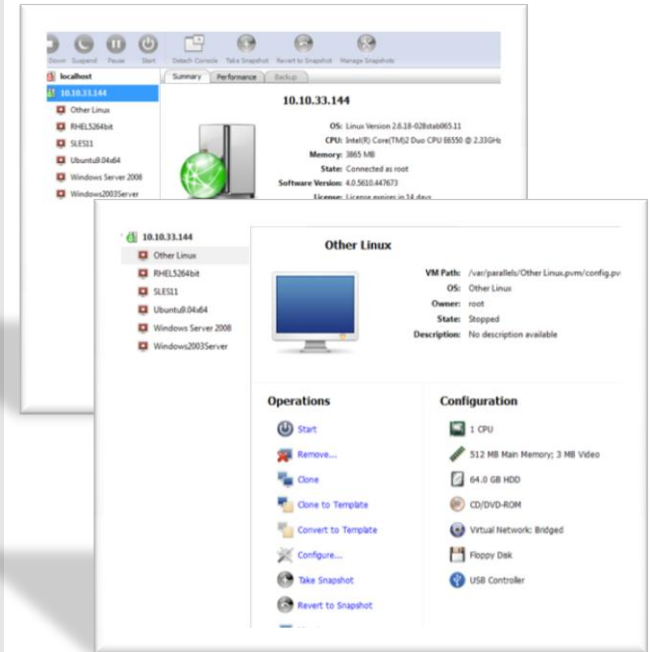
Live Migration of
running virtual
machines

USB support,
remote display,
virtual networking

Migration of physical
computers to virtual
machines

Performance
dashboard

Parallels Server 4 Bare Metal



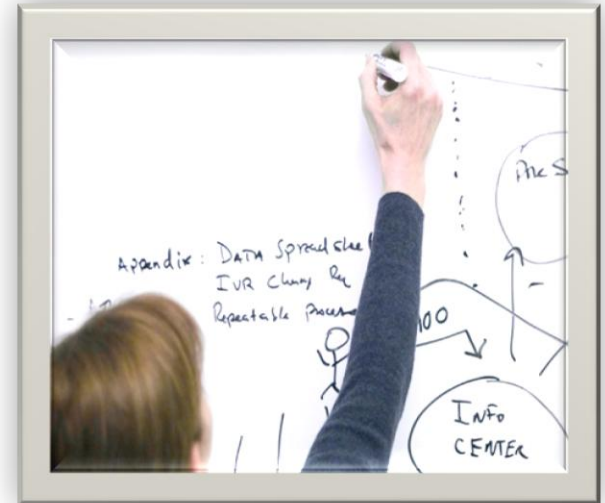
It's affordable

- Software license includes hypervisor, multi-server management console, backups & snapshots, migration of running VMs & migration from physical computers to VMs
- Support includes phone, email & web assistance
- Product updates are included
- No limit to physical CPUs per server
- 359 € one time fee includes software license & 1 year Gold support
- Annual renewal after year 1 is only 80 €

*(Compare that to \$498 **per year** for VMware ESXi support of a single 2 processor server)*

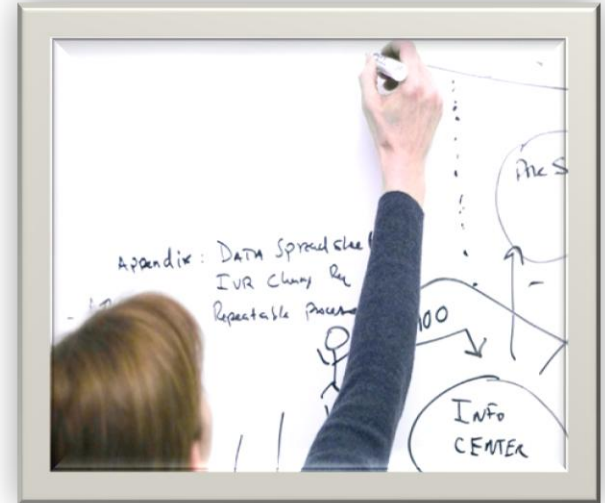
It's better than the competition

- ✓ No limit to number of CPUs on your physical servers
- ✓ Each virtual machine can access up to 12 virtual CPUs for best in class power!
- ✓ Full and incremental backups are included
- ✓ Migration of running virtual machines is included
- ✓ No shared storage for migration



Requirements

- ✓ Processor needs to have Intel-VT_x or AMD-V support
- ✓ Core2Duo or higher for 64bit Guest VMs
- ✓ Network connection
- ✓ 3GB Hard disk space for the core installation



Which PSBM edition is right for you?

	Small Business Edition	Standard Edition	Advanced Edition
Maximum number of server CPUs	Unlimited	Unlimited	As licensed
Included Management	Parallels Management Console	Parallels Virtual Automation	Parallels Virtual Automation
Multi-user web based administration	No	Yes	Yes
Mass management of servers & virtual environments	No	Yes	Yes
Virtual CPUs per virtual machine, Virtual RAM	Up to 12 vCPUs, up to 64GB vRAM	Up to 12 vCPUs, up to 64GB vRAM	Up to 12 vCPUs, up to 64GB vRAM
Resource accounting & reporting	No	Yes	Yes
Backup, recovery & snapshots	Included	Included	Included
Support	Gold level included	Gold & Platinum available	Gold & Platinum Available
Includes Parallels Containers for Linux	No	No	Yes